

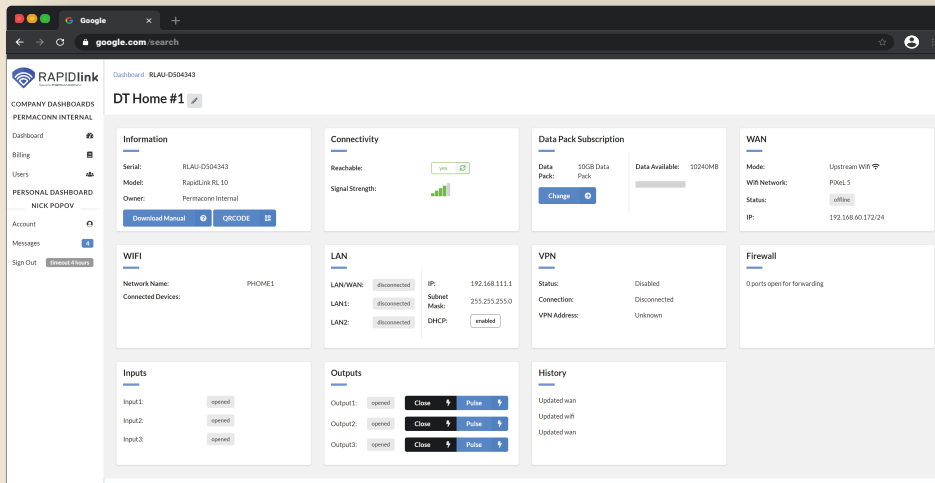


**RAPIDlink**  
Powered by PERMACONN™

# MANAGED 4G LTE ROUTER

## Connectivity Made Easy

RAPIDlink managed 4G LTE routers make connectivity easy for remote sites, standalone networks, or mission-critical applications where high network availability and 4G failover are required.



# RAPIDLINK

Supplied ready for use with in-built 4G connectivity and our secure cloud portal for 24/7 remote management, RAPIDlink routers are fast and easy to install, configure and manage.

**ACCOUNT REGISTRATION**

# WHY US



## Flexible Data Pooling

Enjoy the simplicity of combining your devices to optimise data usage and negate any overage charges.

---



## RAPID Set-up

Our units are compact, easy to mount and ready to use straight out of the box with pre-provisioned 4G connectivity

---



## One Stop Managed Service

One tech support line, one account, and one portal to manage all aspects of the service - from hardware and mobile data services to billing

---



## High Speed 4G LTE

RAPIDlink routers use high-speed 4G LTE networks and the latest chipsets to support higher bandwidth applications such as CCTV



## Dual-SIM Automatic Fail-over

RAPIDlink routers support dual-SIM 4G > 4G fail-over, providing the capability to automatically switch Telco networks for all critical connectivity requirements, at no additional cost

---



## 24/7 Remote Management

24/7 secure remote access to devices in the field regardless of how you choose to configure the public-facing firewall of the router

---



## Mission-Critical Reliability

With automatic failover between IP and 4G and 99.99% network uptime, RAPIDlink provides you and your clients with peace of mind

---



## Flexible and Versatile

RAPIDlink routers can provide wired or wireless connections, act as a passthrough link or bridge an existing network

# RAPIDlink Managed Router

## Specifications

<b>4G LTE-FDD</b>	<b>Frequency</b> B1(2100MHz), B2(1900MHz), B3(1800MHz), B4(1700MHz) B5(850MHz), B7(2600MHz), B8(900MHz), B28(700MHz) <b>Bandwidth</b> Max 150Mbps (DL) Max 50Mbps (UL)
<b>3G HSPA+</b>	<b>Frequency</b> B1(2100MHz) B5(850MHz) B8(900MHz) <b>Bandwidth</b> Max 42Mbps (DL) Max 5.76Mbps (UL)
<b>Antennas</b>	2 antennas for Cellular (MIMO) + 1 for Wi-Fi
<b>WiFi Capability</b>	Supports: IEEE 802.11b/g/n Frequency: 2.4GHz
<b>Ethernet Specs</b>	<b>Ports</b> 3 x RJ-45 ports <b>Physical layer</b> 10/100 Base-T <b>Data rate</b> 10/100 Mbps <b>Interface</b> Auto MDI/MDIX
<b>Routing/Failover</b>	IP pass-through; NAT, IP Port Forwarding; DHCP; DNS Client and Server
<b>Failover</b>	Automatic failover/ fallback from IP (WAN) to 4G
<b>Management</b>	Remote configuration via RAPIDlink web portal
<b>Auxiliary Input</b>	3 x 24Hr inputs state change detected every second EOL 3.3K
<b>Auxiliary Output</b>	3 x Open Collector outputs @ 50mA (max). Function control using RAPIDlink web portal.
<b>Dimensions</b>	110mm (h) x 25mm (d) x 80mm (w)
<b>Weight</b>	180g
<b>Power</b>	10 to 15V DC
<b>Consumption</b>	Idle 0.12A @13.8V DC
<b>Transmitting</b>	0.35A @ 13.8V DC
<b>Operating Environment</b>	0°C - 50°C @ 15% to 85% humidity (non condensing)



**RAPIDlink**  
Powered by PERMACONN™

For further information visit [rapidlink.com](http://rapidlink.com),  
call 1300 55 66 43 or email [mail@rapidlink.com](mailto:mail@rapidlink.com)