

Features

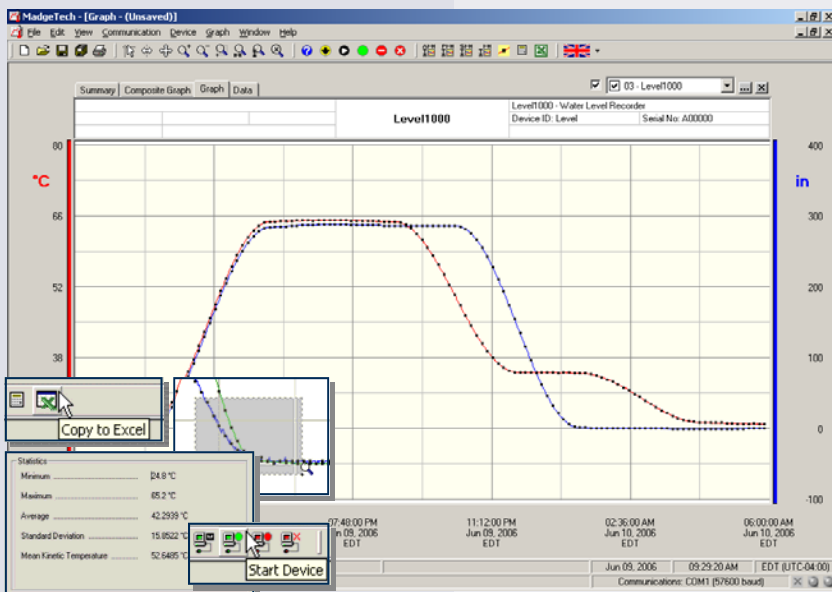
- Resistant to corruptions and chemicals
- Rugged design
- User-friendly
- Reusable
- Submersible up to 100'
- Programmable start time
- Powerful software simplifies analysis

Applications

- Water level monitoring
- Environmental studies
- Waste water treatment
- Flood analysis
- Groundwater monitoring
- Irrigation canals
- Lake and wetland studies
- Storm water studies
- Landfill and hazardous site analysis

The Level1000 is a battery powered,

stand alone, submersible water level and temperature recorder. This is an all-in-one compact, portable, easy to use device that will measure and record up to 16,383 measurements. The storage medium is non-volatile solid state memory, providing maximum data security even if the battery becomes discharged. The device can be started and stopped directly from your computer and its small size allows it to fit almost anywhere. The Level1000 makes data retrieval quick and easy. Simply plug it into an empty COM or USB port and our user-friendly software does the rest.



MadgeTech Data Recorder Software

displays water level and temperature data in an easy to use graph.

The Windows®-based software package allows the user to effortlessly collect, display and analyze data. A variety of powerful tools allow you to examine, export, and print professional looking data with just a click of the mouse.

Click [MadgeTech Software](#) for more information or to download the software.

LEVEL1000 SPECIFICATIONS*

Temperature Sensor: Semiconductor
Temperature Range: -40 to +80°C
Temperature Resolution: 0.1°C
Calibrated Accuracy: ±0.5°C (0 to +50°C)

Pressure Sensor: Semiconductor strain gauge
Media Compatibility: Must be compatible with 303 stainless steel
Nominal Range: 0 to 30'
Measurement Range: 0 to 100'
Resolution: 0.05"
Calibrated Accuracy: Nominal range ±0.3% max @ 25 °C
Response Time: 90% change in 1ms
Repeatability: ±0.5%FSR; ±0.2% typical
Proof Pressure: 90 PSIA
Level Accuracy: ± 2.5"
Memory: 16,383 readings per channel; 32,766 total readings
Real Time Recording: May be used with PC to monitor and record data in real time

Reading Rate: 1 reading every 2 seconds to 1 every 12 hours
Start Modes: Software programmable immediate start or delay start up to six months in advance
Calibration: Digital calibration through software
Calibration Date: Automatically recorded within device
Battery Type: 3.6V lithium battery included; **user replaceable**
Battery Life: 1 year typical at 25°C
Data Format: Date and time stamped °C, °F, K, °R; PSI, inches, feet, millimeters, centimeters, meters (of water column)
Time Accuracy: ±1 minute/month (RS232 cable not in use)
Computer Interface: PC serial or USB (interface cable required); 2,400 baud
Software: XP SP3/Vista/Windows 7
Operating Environment: -40 to +80°C, 0 to 100%RH
Dimensions: 5.7" x 1.25" dia. (145mm x 32mm)
Weight: 8 oz (220 g)
Approvals: CE

BATTERY WARNING: RISK OF FIRE OR EXPLOSION. DO NOT RECHARGE, FORCE OPEN, HEAT OR DISPOSE OF IN FIRE.

SOFTWARE FEATURES

Multiple Graphs:	Simultaneously analyze data from several units or deployments; easily switch to a single data series	Statistics:	Calculate averages, min, max, standard deviation, and mean kinetic temperature with the touch of a button
Graphical Cursor:	One click displays readings by time, value, parameter or sample number	Export Data:	Export data in a variety of common formats, or switch to Excel® with a single click
Data Table:	Instantly access tabular view for detailed dates, times, values, and annotations	Calibration:	Automatically calculate and store calibration parameters
Scaling Options:	Autoscale function fits data to the screen, or allows user to manually enter their own values	Logger Configuration:	Easy set up and launch of data loggers with immediate or delayed start, preferred sample rate, and device ID
Formatting Options:	Change colors, line styles, plotting options, show or hide channels quickly	Communications:	Automatically sets up communications port, or lets user select configuration

*SPECIFICATIONS ARE SUBJECT TO CHANGE WITHOUT NOTICE.
SPECIFIC WARRANTY AND REMEDY LIMITATIONS APPLY.
CALL 1-603-456-2011 OR GO TO WWW.MADGETECH.COM FOR DETAILS.

ORDERING INFORMATION

Model	Description
LEVEL1000	Water Level and Temperature Recorder
IFC110	Software, manual and RS232 interface cable
IFC200	Software, manual and USB interface cable
NIST	N.I.S.T. Calibration Certificate
TL-2150	Replacement battery for Level1000

ASK ABOUT OUR OTHER DATA RECORDERS

Temperature	Pulse/Event/State
Humidity	Low Level Current
Pressure	Low Level Voltage
pH	RF Transmitters
Level	Intrinsically Safe
Shock	Spectral Vibration
LCD Display	

Supplied in Australia by Instrument Choice
Call our scientists on 1300 737 871
www.instrumentchoice.com.au



DOC-1078009-00 REV F 2010.06.28