

Features

- Large LCD Display
- User-friendly
- Automatic temperature compensation
- Programmable start time
- Real-time operation
- Programmable engineering units
- N.I.S.T. traceable

Applications

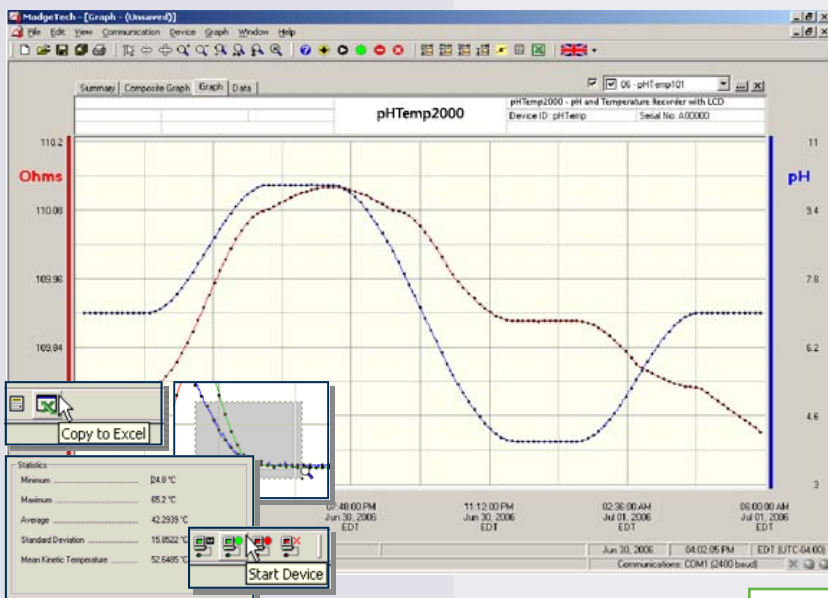
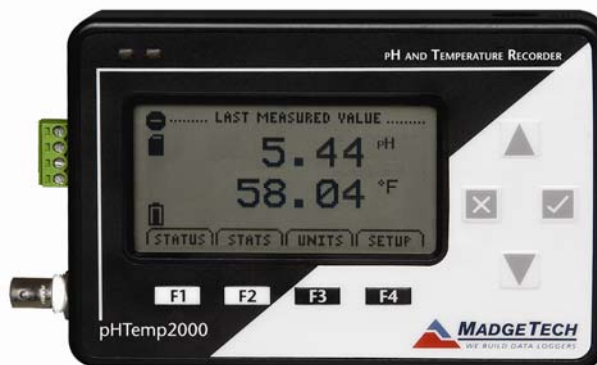
- Surface and ground water quality monitoring
- Environmental and wetlands monitoring
- Industrial influent and effluent
- Water districts and municipal water systems
- Process water quality
- Recreation and park management
- Pulp and paper industry
- Wastewater monitoring

The pHTemp2000 is a battery powered, stand alone pH and temperature logger with an LCD. This all-in-one compact, portable, easy to use device will measure and record up to 131,071

readings per channel. The pHTemp2000 will directly connect to many commonly used pH, ORP and ISE electrodes through a female BNC connector mounted on its side. Temperature is measured by directly connecting an RTD to the pHTemp2000. Temperature compensation is automatically done internally to the unit.

The storage medium is non-volatile solid state memory, providing maximum data security even if the battery becomes discharged. The device can be started and stopped directly from your computer.

The pHTemp2000 makes data retrieval quick and easy. Simply plug it into an empty USB port and our user-friendly software does the rest.



MadgeTech Data Recorder Software

displays pH and temperature data in an easy to use graph.

The Windows®-based software package allows the user to effortlessly collect, display and analyze data. A variety of powerful tools allow you to examine, export, and print professional looking data with just a click of the mouse.

Click [MadgeTech Software](http://www.instrumentchoice.com.au) for more information or to download the software.

Supplied in Australia by Instrument Choice
 Call our scientists on 1300 737 871
www.instrumentchoice.com.au

PHTEMP2000 SPECIFICATIONS*

Temperature**

Measurement Range: -40 to +110°C (80 to +145Ω)
Resolution: 0.01°C (0.001Ω)
Calibrated Accuracy: ±0.15°C @ 25°C ambient (±0.015Ω)***
Input Connection: Removable screw terminal; 2,3 or 4-wire interface****

pH/ORP/ISE

Input Connection: Female BNC
Measurement Range: -2.00 to 16.00
Resolution: 0.01/0.001pH
pH Accuracy: ±0.01pH
pH EMI Susceptibility: <0.2pH@3V/M, 80MHz to 1GHz
ORP/ISE Accuracy: ±0.1mV
ORP/ISE EMI Susceptibility: <10mV@3V/M, 80MHz to 1GHz
Input Impedance: 10¹² Ω typical
ORP/ISE Measurement Range: ±1.25V

**Temperature specifications based on ideal 100 Ω Pt RTD compliant with IEC 751 (1983) and ITS-90, 5000 Ω FSR (accuracy based on 36" lead wire RTD with 4 wire configuration)

***Calibrated accuracies based on standard MadgeTech calibrations for 0 to 200Ω range.

****100 Ohm, 2 or 4 wire RTD probes are recommended for the most accurate performance. Most 100 Ohm, 3 wire RTD probes will work, but MadgeTech cannot guarantee the accuracy. To determine whether or not the 3-wire RTD probe will work, the resistance between the two same colored wires should be less than 1 Ohm. (Note: Please contact the manufacturer of the RTD probe for questions on the resistance)

For use in harsh environments, this device must be well protected from weather, steam and harsh chemicals

DOT-MATRIX LCD

Dimensions: 2.5" x 1.375" (63mm x 35mm)
Text: Configurable channel text size
Indicators: Power, status, memory
Backlight: Configurable w/auto shut-off and contrast adjustment
Memory: 131,071 readings per channel
Reading Rate: 1 reading every 2 seconds to 1 every 24 hours
Calibration: Digital calibration through software
Calibration Date: Automatically recorded within device
Battery Type: 9V lithium or alkaline battery included; user replaceable
Battery Life: 1 year battery life at 1 minute reading rate with display off. 30 days typical with continuous display use. Optional AC adapter available.
Data Format: Date and time stamped °C, °F, °K, °R, Ω; pH, V, mV, engineering units specified through software
Time Accuracy: ±1 minute/month (at 25 °C; RS232 cable not in use)
Computer Interface: USB (interface cable required); 115,200 baud
Software: XP SP3/Vista/Windows 7
Operating Environment: -5 to +50°C, 0 to 95%RH (non-condensing)
Dimensions: 4.8" x 3.3" x 1.25" x (122mm x 84mm x 32mm)
Weight: 16 oz (440 g)
Approvals: CE

BATTERY WARNING: DISCARD USED BATTERY PROMPTLY. KEEP OUT OF REACH OF CHILDREN. DO NOT DISPOSE OF IN FIRE, RECHARGE, PUT IN BACKWARDS, DISASSEMBLE, OR MIX WITH OTHER BATTERY TYPES. MAY EXPLODE, FLAME, OR LEAK AND CAUSE PERSONAL INJURY.

SOFTWARE FEATURES

Multiple Graphs: Simultaneously analyze data from several units or deployments; easily switch to a single data series
Real-Time Recording: Collect and display data in real-time while continuing to log
Graphical Cursor: One click displays readings by time, value, parameter or sample number
Data Table: Instantly access tabular view for detailed dates, times, values, and annotations
Scaling Options: Autoscale function fits data to the screen, or allows user to manually enter their own values
Formatting Options: Change colors, line styles, plotting options, show or hide channels quickly

Statistics: Calculate averages, min, max, standard deviation, and mean kinetic temperature with the touch of a button
Export Data: Export data in a variety of common formats, or switch to Excel® with a single click
Calibration: Automatically calculate and store calibration parameters
Logger Configuration: Easy set up and launch of data loggers with immediate or delayed start, preferred sample rate, and device ID
Communications: Automatically sets up communications port, or lets user select configuration
Printing: Automatically print graphical or tabular data

*SPECIFICATIONS ARE SUBJECT TO CHANGE WITHOUT NOTICE.
SPECIFIC WARRANTY AND REMEDY LIMITATIONS APPLY.
CALL 1-603-456-2011 OR GO TO WWW.MADGETECH.COM FOR DETAILS.

ORDERING INFORMATION

Model	Description
PHTEMP2000	pH and Temperature Recorder with LCD Display
IFC200	Software, manual and USB interface cable
U9VL-J	Replacement battery for pHTemp2000
DC9V-NA	Wall Mounted 120VAC/9VDC power adapter. (North American Model)
DC9V-EU	Wall Mounted 230VAC@50Hz/9VDC power adapter. (European Model)

ASK ABOUT OUR OTHER DATA RECORDERS

Temperature	Pulse/Event/State
Humidity	Low Level Current
Pressure	Low Level Voltage
pH	RF Transmitters
Level	Intrinsically Safe
Shock	Spectral Vibration
LCD Display	

For quantity discounts call 1300 737 871 or email customer-service@instrumentchoice.com.au

